

STUDENT COURSE FEEDBACK FORM QUESTIONS (EVEN SEM - 2022-23)

Students are required to provide feedback on the faculty and course conduct for each subject under the following three heads

I.ACADEMIC DISCIPLINE AND PUNCTUALITY

1. Declaring lecture schedule / studio program
2. Conducting reviews as per the declared schedule
3. Declaring review assessment marks
4. Coverage of the syllabus and spacing of classes
5. Behaviour and coordination amongst the faculty members in the class

II. TEACHING AND ASSESSMENT

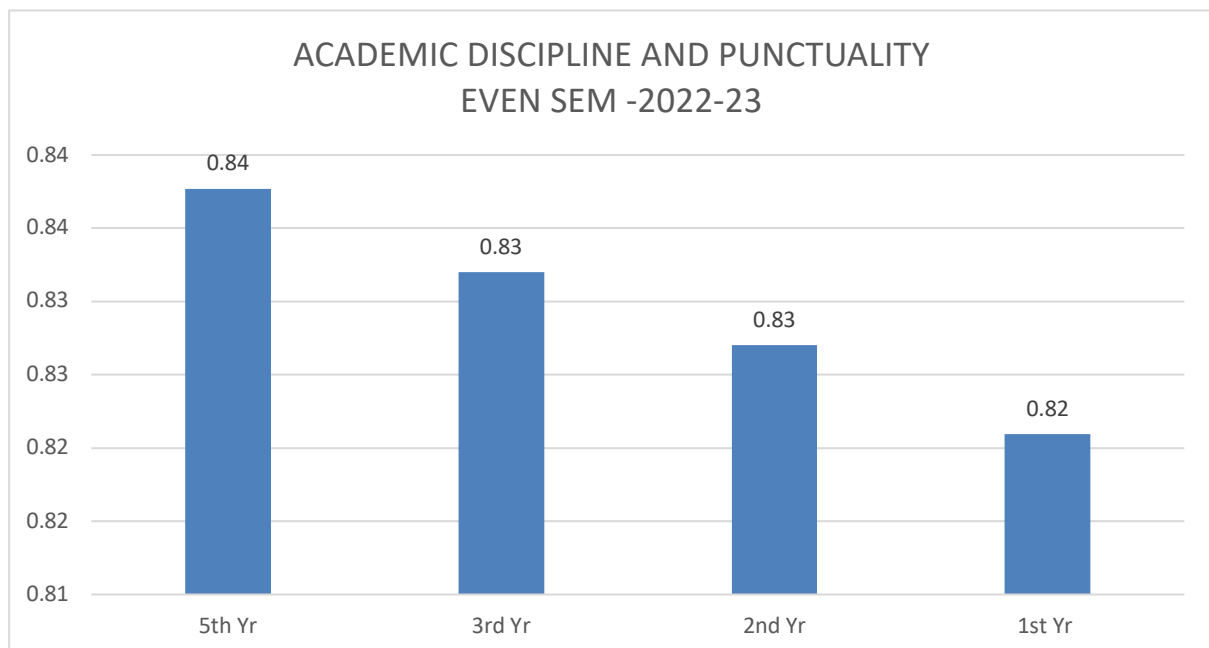
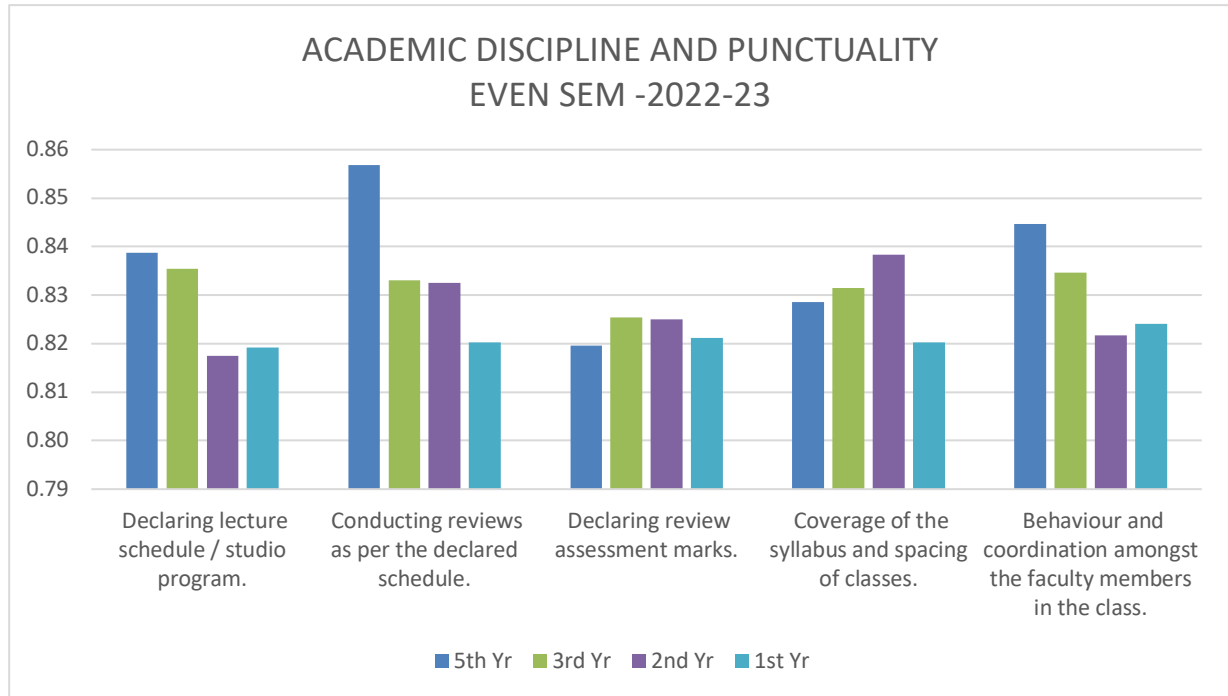
1. Subject Knowledge and method used to conduct classes
2. Encouraging creative thinking and accommodating unconventional approach
3. Transparency in declaring judging criteria and assessment
4. Giving regular feedback on the mistakes made by the student
5. Relevance and quantity of sessional work load given

III.COURSE CURRICULUM

1. Relevance of the course to the Architectural education and to the societal needs
2. Coverage of all basic and recent concepts in the course content
3. Balance between theory and applications in real life situations
4. Course content generates interest in the subject area
5. Focus of the course on skill development to create scope for entrepreneurship and employment

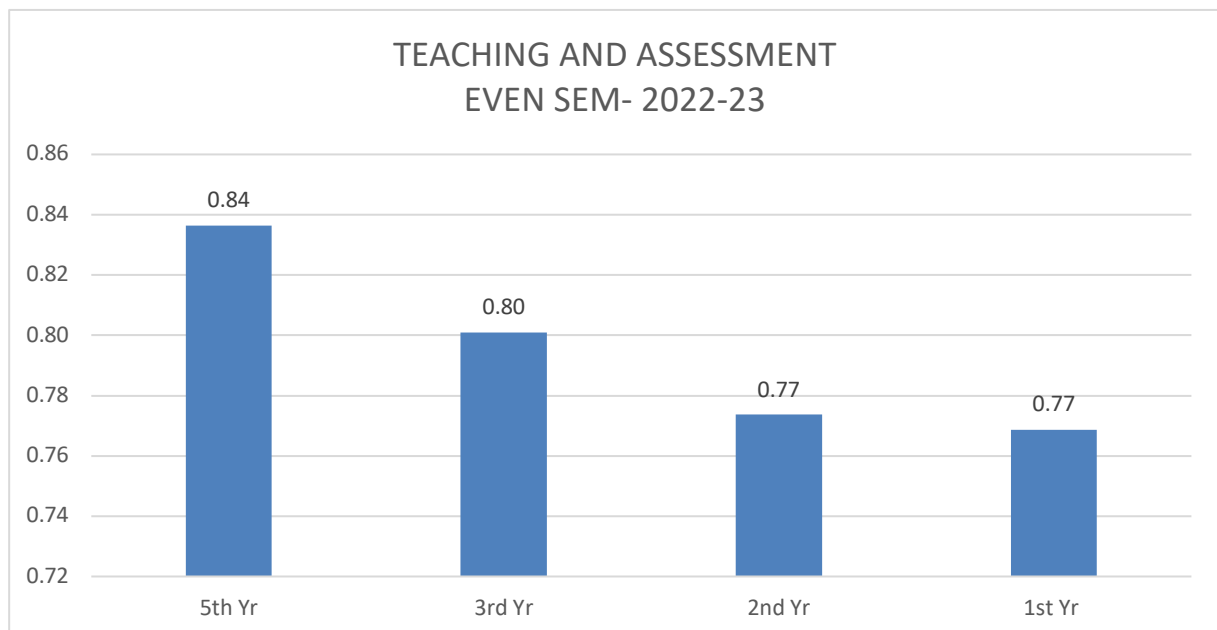
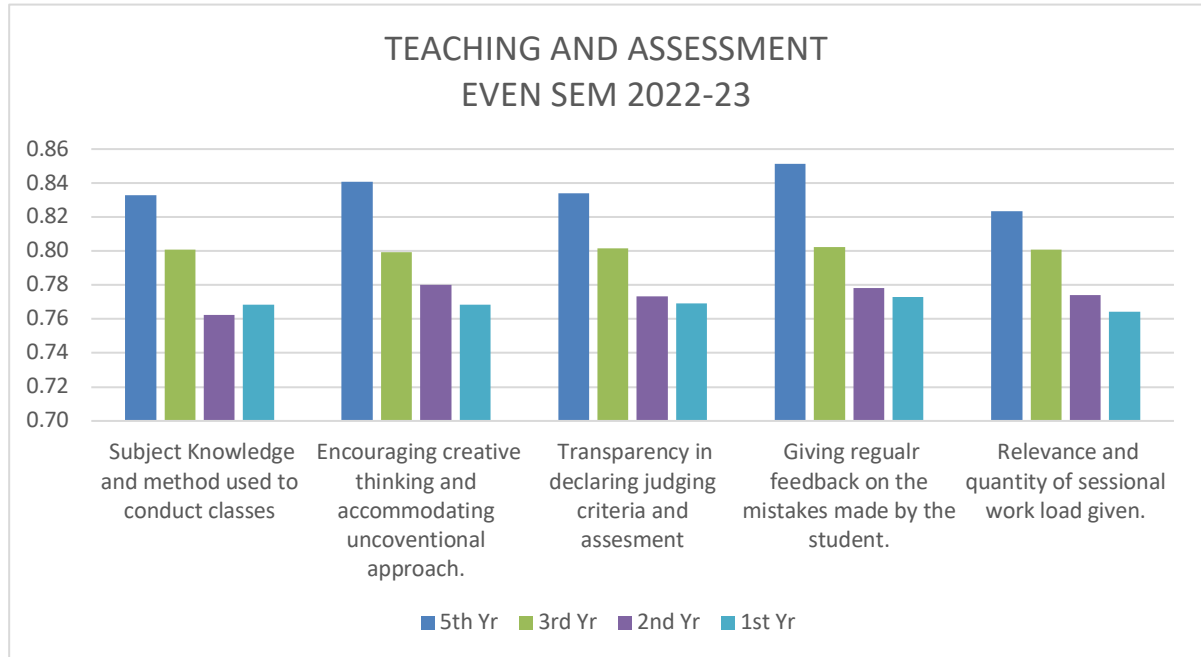
STUDENT COURSE FEEDBACK ANALYSIS (EVEN SEM -SESSION 2022-23)

ACADEMIC DISCIPLINE AND PUNCTUALITY



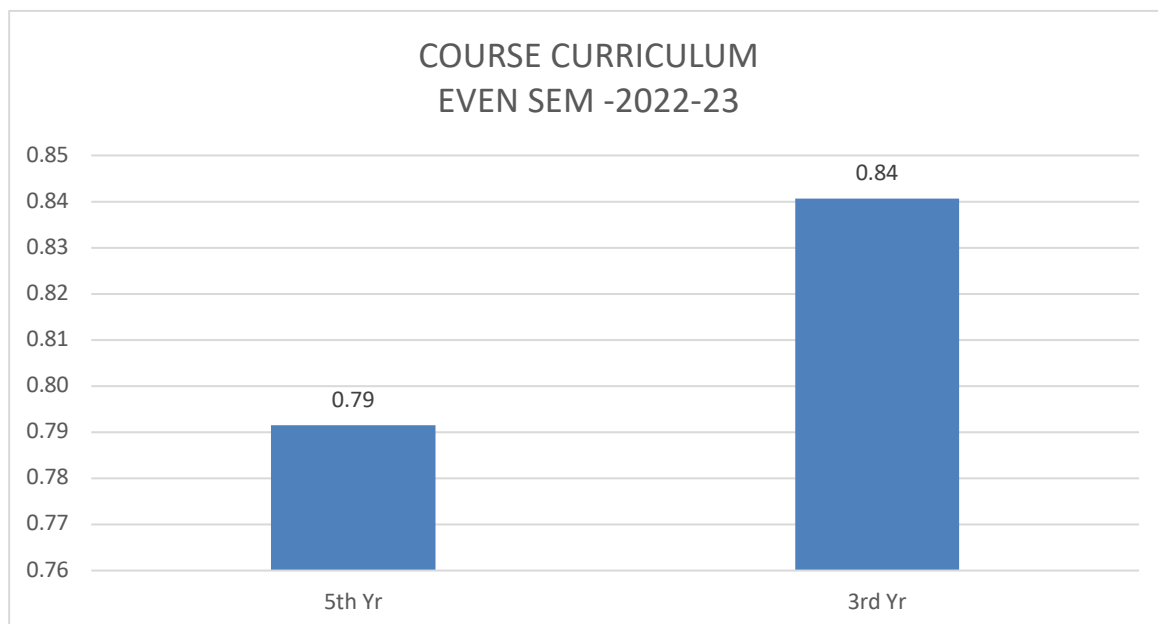
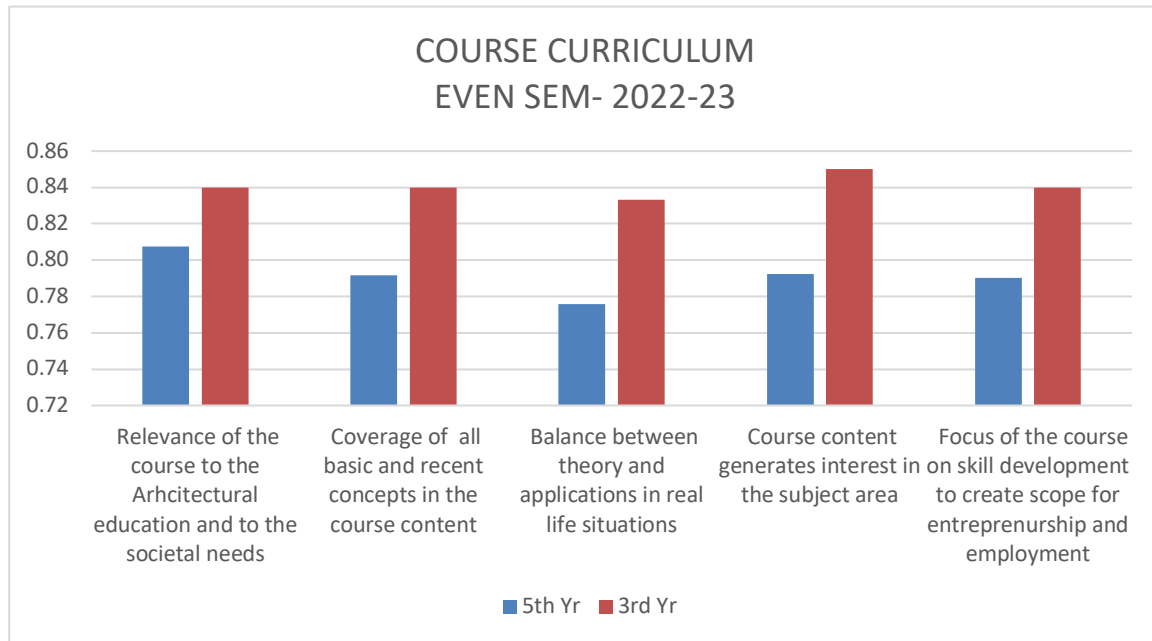
STUDENT COURSE FEEDBACK ANALYSIS (EVEN SEM -SESSION 2022-23)

TEACHING AND ASSESSMENT



STUDENT COURSE FEEDBACK ANALYSIS (EVEN SEM -SESSION 2022-23)

COURSE CURRICULUM



**OVERALL STUDENT FEEDBACK ON ACADEMIC DISCIPLINE AND PUNCTUALITY;
TEACHING AND ASSESSMENT & COURSE CURRICULUM**

